

Dianema depressum (Lister) Lister

MEL345 0188

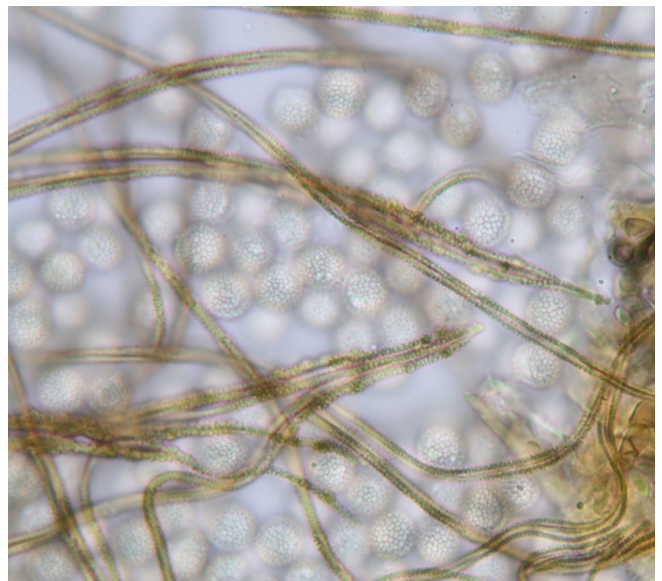
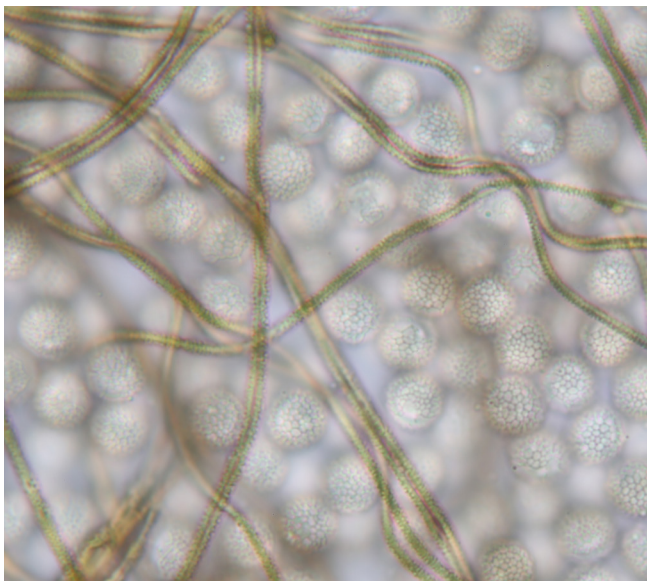
Date 22 Sept. 2014. Black Sugarloaf, Birrale (big tree track).

Habitat: Closed wet Eucalypt forest.

Substrate: Strongly decayed *Bedfordia salicina*.

Description: Flat, thin irregularly-shaped plasmodiocarps up to 11 mm long x 0.5 mm high, shiny brown. **Hypothallus** extending beyond edge of plasmodiocarps, shiny. **Peridium** thin, shiny, sometimes wrinkled, faint hexagonal pattern, brown, dehiscence irregular. **Capillitium** abundant, attached to peridium, minute tubercles on some edges, united into clusters of several threads, 1.4 µm diameter. **Spores** beige in mass, pale by transmitted light with small-meshed interrupted reticulum, 8 µm.

Notes: Darker and less crowded than first collection (see below)



Dianema depressum (Lister) Lister

MEL285 0281

Date 6 Oct. 2013. Black Sugarloaf, Birrale (big tree track).

Habitat: Closed wet Eucalypt forest.

Substrate: Strongly decayed *Clematis aristata* on ground near southern end of track.

Description: Flat, thin, irregularly-shaped plasmodiocarps up to 3.5 mm long x 0.5 mm high. **Peridium** thin, shiny, pale sandy brown, dehiscence irregular. **Capillitium** abundant, attached to peridium, minutely warted, 1.4 µm diameter.

Spores: Beige in mass, paler by transmitted light with interrupted, small-meshed reticulate pattern.

Notes: Collected for the first time from decayed *Clematis aristata* on the ground. It has not yet reappeared on this substrate.

