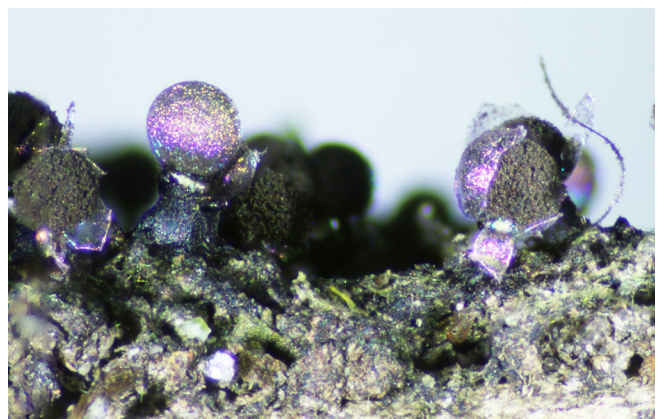
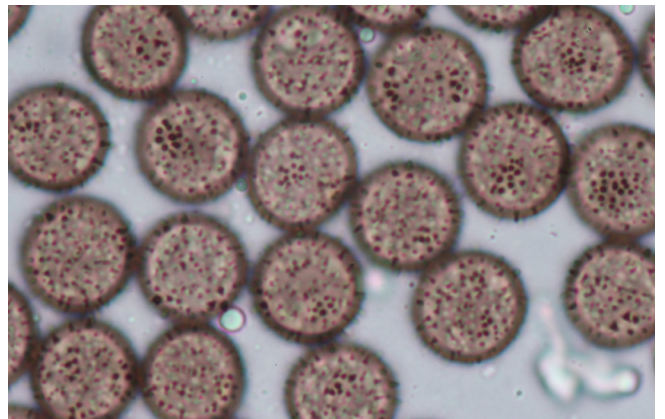
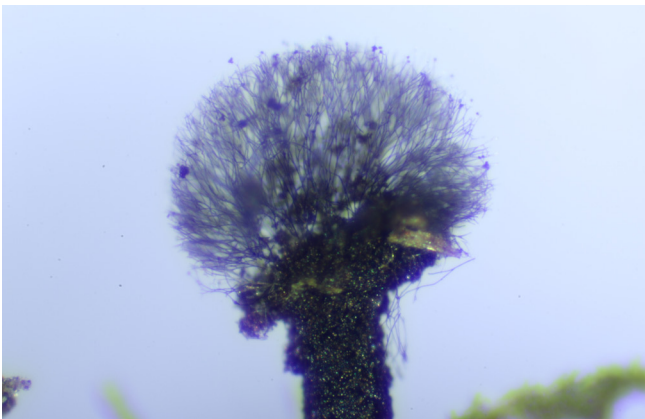
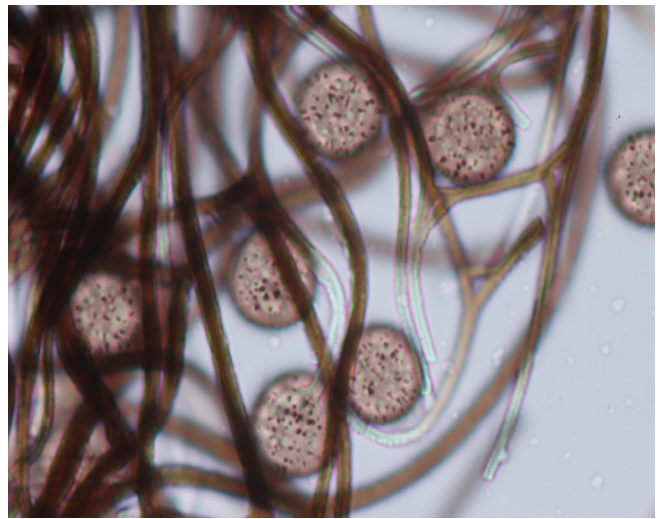
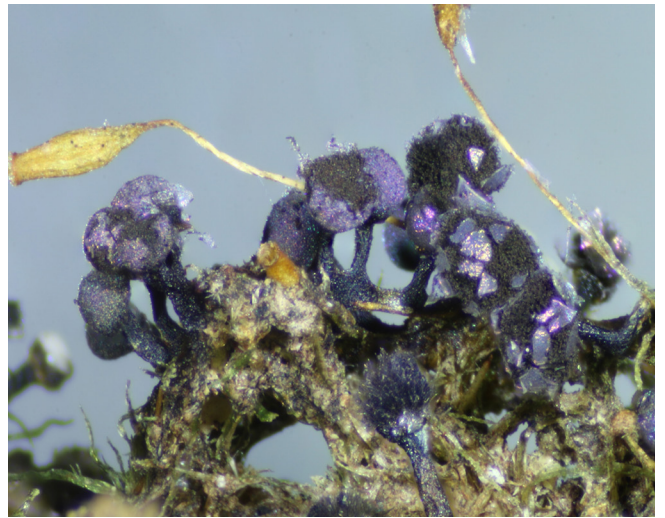


Date 10 Oct. 2014. Black Sugarloaf, Birrale (big tree track).

Habitat: Closed wet Eucalypt forest.

Substrate moss on big tree log. **Description** gregarious and crowded stalked sporangia, 2 mm high. **Sporotheca** subglobose, 0.6 mm high x 0.8 mm wide. **Stalk** granular, 0.7 mm long, black; dark waxy disc-shaped 'collar' at top of stem is bright yellow in immature sporangia. **Hypothallus** continuous under group, thick, dark brown to black. **Peridium** membranous, iridescent with green, blue, purple and golden reflections; usually splitting into four triangular 'pennants'. **Capillitium** straight, some branching, purplish brown, white at tips. **Spores** dark brown in mass, lighter by transmitted light with sparse irregular spines, 10–10.5 μm .

Notes: This species is very common in some years. It usually appears in small groups on moss on old logs and stumps; it sometimes appears on the wood.



12 August 2012.

10 Oct. 2014. MEL354 #0024