

Date 15 Sept. 2016. Black Sugarloaf, Birralee (big tree track).

Habitat: Closed wet Eucalypt forest.

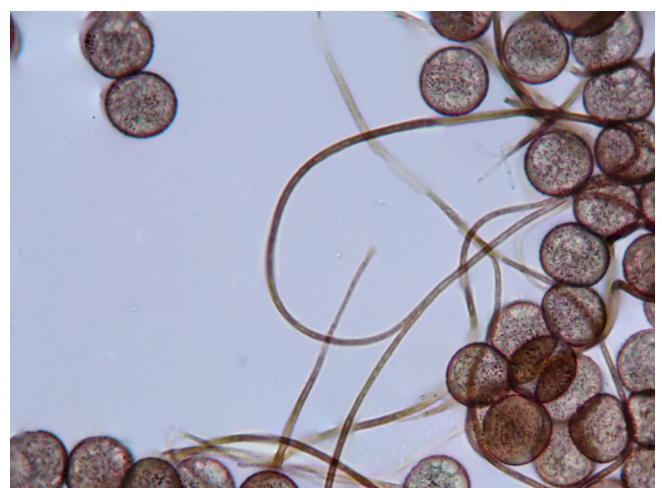
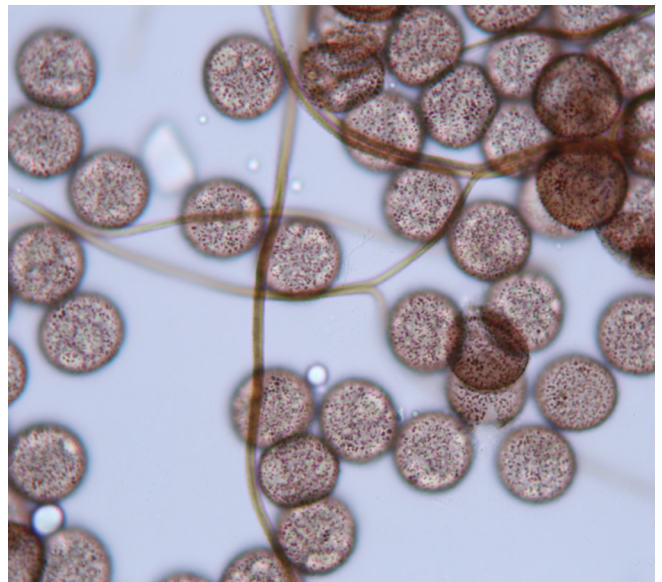
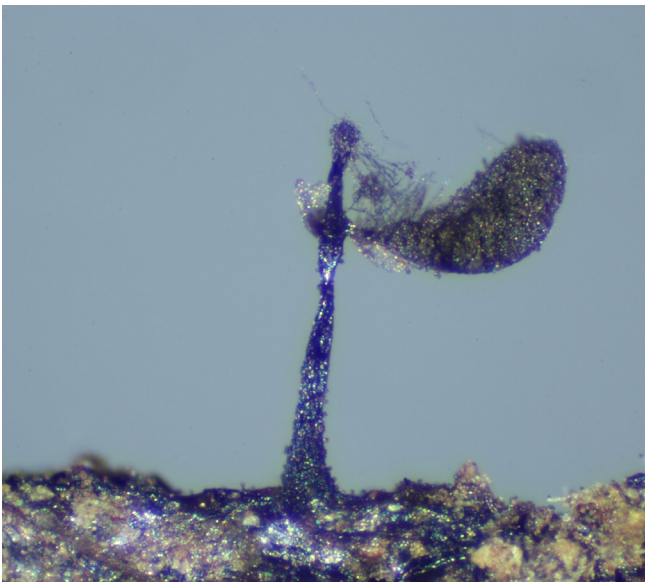
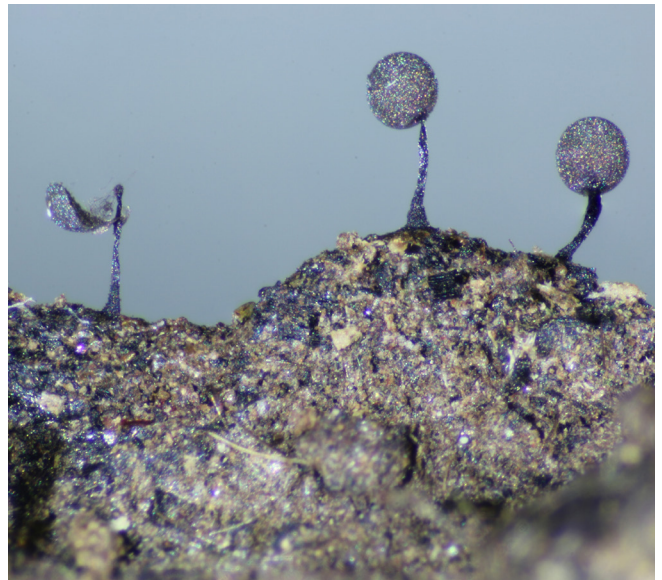
Substrate: wood of big tree log.

Description scattered stalked sporangia 1.1 mm high.

(Much smaller than other *Lamproderma* species.) **Sporotheca** globose, 0.5 mm diameter. **Stalk** black, 0.7–0.8 mm long.

Hypothallus discoid or contiguous under close sporangia, brown. **Peridium** membranous, remaining as a small collar at base of sporangia, iridescent. **Columella** extends about ½ up sporotheca, bulbous. **Capillitium** sparse, straight simple sometimes bifurcating threads arising from the rounded tip of the columella and easily falling away; brown threads, lighter at tips. **Spores:** dark brown in mass, brown by transmitted light, warted, 13–14 µm.

Notes: Two collections only prior to 2016. Appeared in several locations in September 2016, usually in small groups of 2–4 sporangia with the largest group being #0724 (see below). Spores too large for *L. elasticum*.



Lamproderma elasticum #0724 on moss on large decaying bryophyte-covered log (big tree track, upper gully).