

Date 27 Dec. 2013. Black Sugarloaf (big tree track).

Habitat: Closed wet Eucalypt forest. (MEL283)

Substrate: On leafy liverwort on large eucalypt stump.

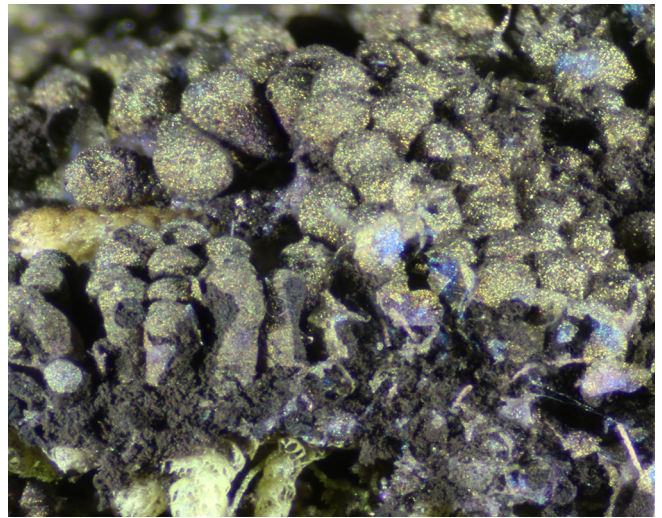
Description densely crowded, sessile, cylindrical to clavate (club-shaped) sporangia, 1.5 mm high. **Sporotheca** 0.3 mm diameter at base; 0.5 mm diameter at apex. **Hypothallus** contiguous under group, conspicuous, thick, yellow brown.

Peridium delicate but mostly persistent, iridescent with golden, blue and purple reflections.

Columella reaches to near the apex of the sporotheca, brittle, light brown with woody appearance.

Capillitium attached along full length of columella, sparsely branching, bifurcating at tips; reddish brown with lighter tips. **Spores** brown in mass, paler by transmitted light, coarsely warted, 10–13 µm.

Notes Several collections of this conspicuous species in 2012 & 2013 and again in December 2016.



14 December 2012 *Paradiachea caespitosa* on old eucalypt log.

