

**Date** 22 June 2014 Black Sugarloaf, Birralee (big tree track)

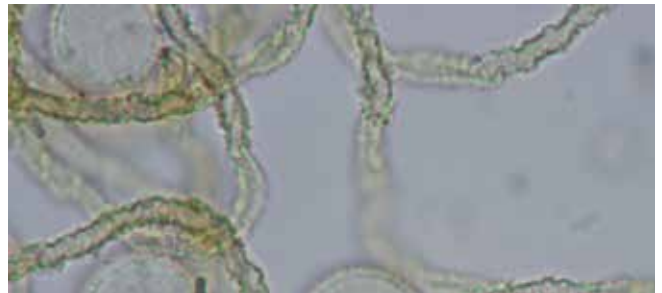
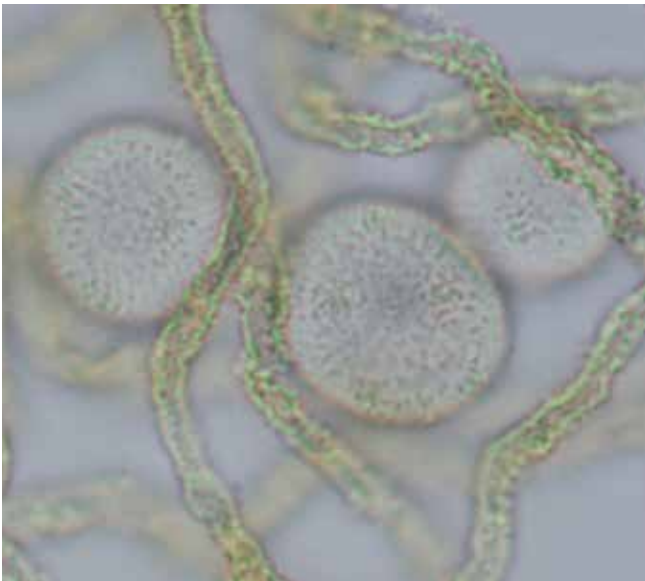
**Habitat:** Closed wet Eucalypt forest.

**Substrate:** Dead *Clematis aristata* upslope from track.

**Description:** Small groups of vermiform plasmodiocarps, light and dark brown, 2.1 mm long x 0.3 mm diameter.

**Hypothallus** contiguous under group, shiny. **Peridium** persistent in most plasmodiocarps, very finely granular, finely dotted (papillate or punctate) by transmitted light, dehiscence irregular. **Capillitium** tubular, mustard yellow with minute warts or spines 3 µm diameter. **Spores** yellow in mass, pale yellow by transmitted light, minutely warted, 10–15 µm.

**Notes:** Other species found on dead *Clematis aristata* included *Badhamia panicea*, *Dictydiaethalium plumbeum*, *Physarum pusillum*, *Didymium nigripes*, *D. applanatum*, *Dianema depressum*.



**Date** 4 Oct. 2013 Black Sugarloaf, Birralee (big tree track)

**Habitat:** Closed wet Eucalypt forest.

**Substrate:** Dead *Clematis aristata*.

**Description:** Small group of vermiform plasmodiocarps, mustard brown, 2.1 mm long x 0.3 mm diameter.

**Peridium:** Same as above but much lighter in colour.

**Note:** This species is yet to appear on a substrate other than dead *Clematis aristata*.

