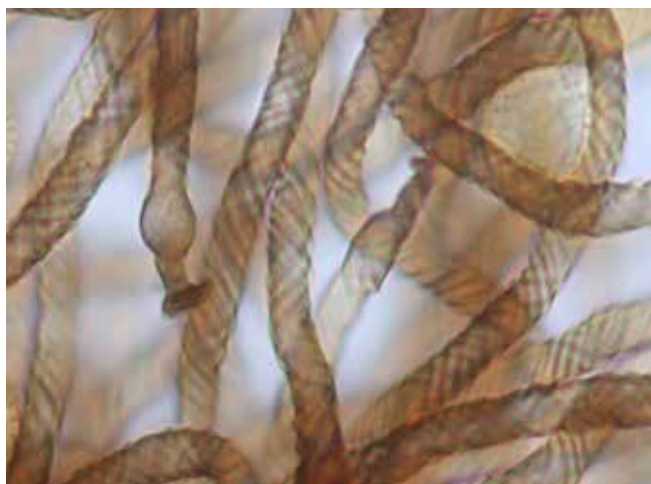


Hemitrichia lutescens (Lister) Garcia.-Cunch., J.C. Zamora & Lado

Date 26 Aug. 2013. Black Sugarloaf, Birralee (big tree track).
Habitat wet eucalypt forest. **Substrate** dead leaning *Bedfordia salicina*. **Description** scattered sessile globose sporangia, yellow 0.6–0.9 mm diameter. **Hypothallus** translucent yellow brown. **Peridium** membranous, translucent, 'marbled' yellow and ochraceous, dehiscence irregular. **Capillitium** pale yellow simple (unbranched) elaters, 3 µm diameter, spiral bands with free ends either tapering or ending abruptly. **Spores** yellow in mass, pale by transmitted light with scattered warts 10 µm.
Notes Several collections. In 2019 *T. lutescens* appeared in Thismia gully at two locations: it was widely scattered on the bark of two large fallen trees, *Eucalyptus obliqua* and *Acacia melanoxylon*. On 25 January 2020 it appeared again after rain on the *E. obliqua*,
 The widely scattered sporangia are small and fragile and seem to degrade very quickly making them easy to miss or overlook in the field.



25 September 2019

